



Illinois Department of Transportation

Office of Highways Project Implementation / Region 4 / District 7
400 West Wabash / Effingham, Illinois 62401-2699

September 18, 2019

MOTOR FUEL TAX DISTRICT 7 LOCAL PUBLIC AGENCIES

Dear Sir or Madam:

The Motor Fuel Tax (MFT) increase went into effect on July 1, 2019. I wanted to let you know what to expect when receiving the new funds.

Your agency will receive two monthly payments. The first payment will be the original 19 cent tax, which is calculated from the same formula as before (see enclosed Motor Fuel Tax Distribution, Figure 4-3A).

The second payment will be for the increased tax, referred to as Transportation Renewal Funds, which is the additional 19 cent tax. The Transportation Renewal Funds are calculated from a different formula and are distributed as follows:

- 20% to High Speed Rail, Bus & Rapid Transit Rail
- 48% to State Construction
- 32% to Local Public Agencies

The 32% distributed to the Local Public Agencies will follow the original Motor Fuel Tax Distribution formula:

- 16.74% to counties over 1 million in population
- 18.27% to counties under 1 million in population
- 49.1% to municipalities
- 15.89% to road districts/townships

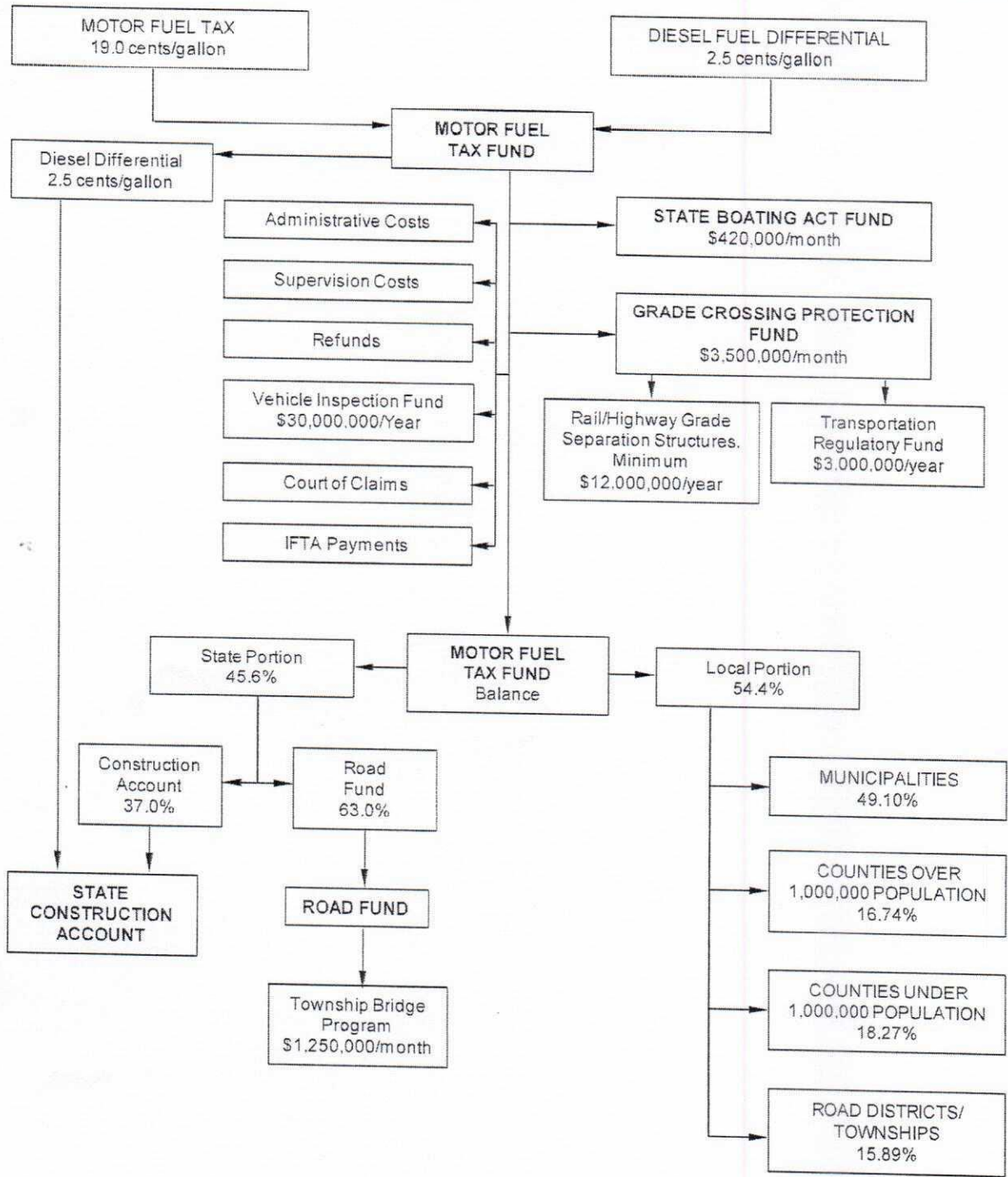
Should you have any questions, please contact this office at 217-342-8322.

Very truly yours,

A handwritten signature in black ink, appearing to read 'Sherry A. Phillips'.

Sherry A. Phillips, P.E.
District Engineer of Local Roads and Streets

Enclosure



MOTOR FUEL TAX DISTRIBUTION

Figure 4-3A